

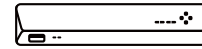
RLN36

Quick Start Guide

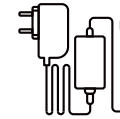
Contents

What's in the Box	2
NVR Introduction	3
Connection Diagram	4
Set up NVR System	6
Troubleshooting	7
Specifications	8
Notification of Compliance	8

What's in the Box



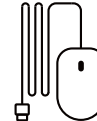
NVR
x1



NVR
Power Adapter
x1



HDMI Cable
x1



USB Mouse
x1

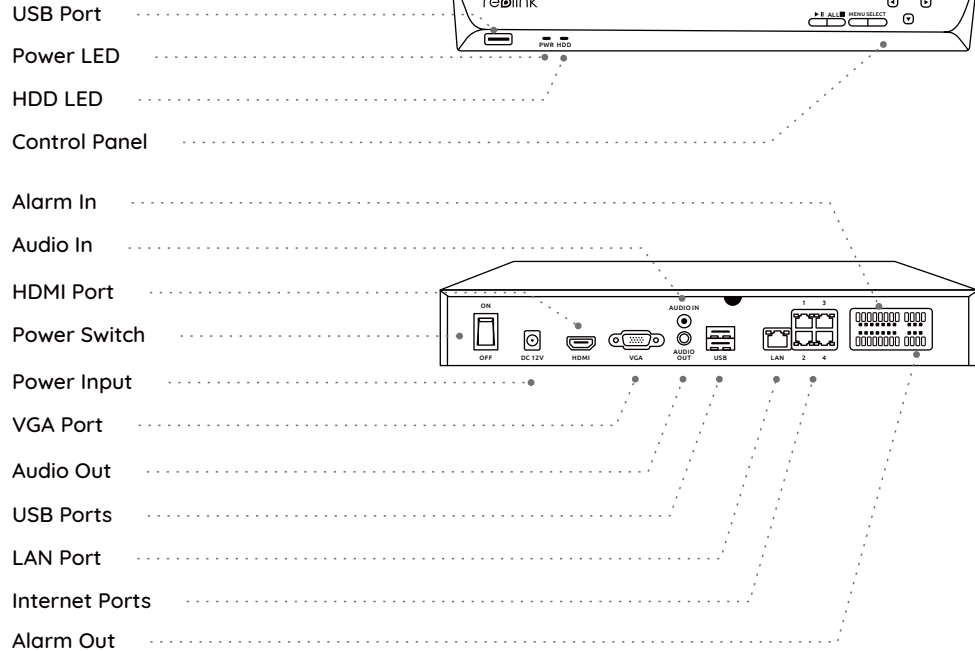


1m Ethernet Cable
x1

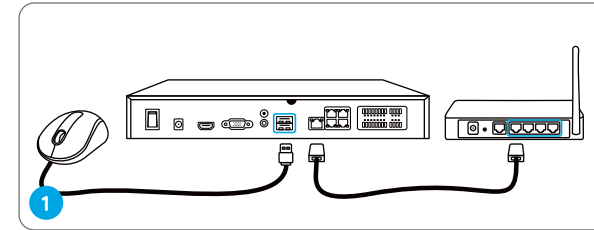


Quick Start Guide
x1

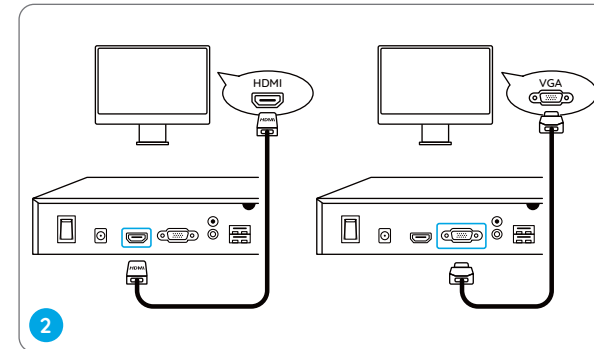
NVR Introduction



Connection Diagram

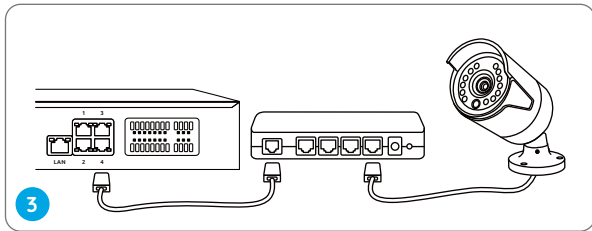


Connect the NVR (LAN port) to your router with an Ethernet cable. Next, connect the mouse to the USB port of the NVR.

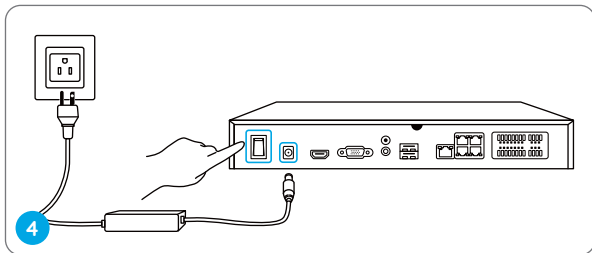


Connect the NVR to the monitor with a VGA or HDMI cable.

NOTE: There is no VGA cable included in the package.



Connect the PoE switch to the NVR and power on the PoE switch. Then connect the camera to the PoE switch via an Ethernet cable.



Connect the NVR to a power outlet and turn on power switch.

NOTE: Some Reolink WiFi cameras also work with Reolink NVR. For more information, visit <https://support.reolink.com> and search Make Reolink WiFi Cameras Work with Reolink NVRs.

Set up NVR System

A setup wizard will guide you through the NVR system configuration process. Please set a password for your NVR (for the initial access) and follow the wizard to configure the system.

NOTE: The password should be at least 6 characters. It is recommended that you note down the password and keep it in a secure place.

Access the NVR via Smartphone or PC

Download and launch the Reolink App or Client software and follow the instructions to access the NVR.

- On Smartphone

Scan to download the Reolink App.



- On PC

Download path: Go to <https://reolink.com> > Support > App & Client.

Troubleshooting

No Video Output on the Monitor

If there's no video output on the monitor from Reolink NVR, please try the following solutions:

- TV/monitor resolution should be at least 720p or above.
- Make sure your NVR is powered on.
- Double check the HDMI/VGA connection, or swap another cable or monitor to test.

If it still doesn't work, please contact Reolink Support <https://support.reolink.com>

Failed to Access the NVR Locally

If you failed to access the NVR locally via mobile phone or PC, please try the following solutions:

- Connect the NVR (LAN port) to your router with a network cable.

- Swap another Ethernet cable or plug the NVR to other ports on the router.
- Go to Menu -> System -> Maintenance and restore all settings.

If it still doesn't work, please contact Reolink Support <https://support.reolink.com>

Failed to Access the NVR Remotely

If you failed to access the NVR remotely via mobile phone or PC, please try the following:

- Make sure you can locally access this NVR system.
- Go to NVR Menu -> Network -> Network Advanced and make sure that UID Enable is selected.
- Please connect your phone or PC under the same network (LAN) of your NVR and see if you can visit any website to verify whether there is Internet access available.
- Please reboot your NVR and home router and try again.

If it still doesn't work, please contact Reolink Support <https://support.reolink.com>

Specifications

Video/Audio Output

HDMI Output: Up to 12MP
VGA Output: Up to 2MP
Audio Output: 1CH RCA

Decoding

Decoding Resolution:
12MP/8MP/5MP/4MP/3MP/1080p/720p
Video Format: H.264,H.265
Synchronous Playback: Up to 4 Channels

General

Operating Temperature:
-10°C ~+55°C (14°F~131°F)
Size: 330 x 48 x 310mm
Weight: 2.26 kg (without HDD)

Notification of Compliance

FCC Compliance Statement

This device complies with Part 15 of FCC

Rules. Operation is subject to the following two conditions: (1) this device may not cause harmful interference, and (2) this device must accept any interference received, including interference that may cause undesired operation. For more information, visit: <https://reolink.com/fcc-compliance-notice/>

Simplified EU Declaration of Conformity

Reolink declares that this device is in compliance with the essential requirements and other relevant provisions of Directive 2014/30/EU.



Correct Disposal of This Product

This marking indicates that this product cannot be disposed with other household wastes throughout the EU. To prevent possible harm to the environment or human health from uncontrolled waste disposal and promote the sustainable reuse of material resources, please recycle it responsibly. To return your used device, please visit the Return and Collection System or contact the retailer from whom the product was

purchased. They can take this product away for environmentally safe recycling.

Limited Warranty

This product comes with a 2-year limited warranty that is valid only if purchased from Reolink Official Store or a Reolink authorized reseller. Learn more:

<https://reolink.com/warranty-and-return/>

NOTE: We hope that you enjoy your new purchase. But if you are not satisfied with the product and plan to return it, we strongly suggest that you format the inserted HDD first.

Terms and Privacy

Use of the product is subject to your agreement to the Terms of Service and Privacy Policy at reolink.com Keep it out of reach of children.

End User License Agreement

By using the Product Software that is embedded on the Reolink product, you agree to the terms of this End User License Agreement (“EULA”) between you and Reolink. Learn more:

<https://reolink.com/eula/>

Technical Support

If you need any technical help, please visit our official support site and contact our support team before returning the products,

<https://support.reolink.com>